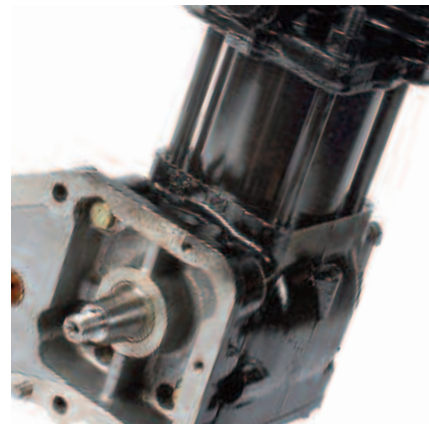


# Genuine Exchange Parts



Exchange parts information

**Cargotec** improves the efficiency of cargo flows by offering solutions for the loading and unloading of goods on land and at sea – wherever cargo is on the move. Cargotec's main daughter brands for cargo handling Hiab, Kalmar and MacGregor are global market leaders in their fields



**Cargotec,**  
Sörnäisten rantatie 23  
P.O. Box 61,  
FI-00501 Helsinki, Finland  
Tel. +358 (0) 204 55 11  
**[www.cargotec.com](http://www.cargotec.com)**





# Genuine Kalmar exchange parts

Maximise your business efficiency with genuine Kalmar exchange parts

# Quality Exchange parts at your fingertips

**When you have invested in the best heavy-duty materials handling equipment it makes sense to protect that investment by specifying genuine Kalmar replacement parts direct from Cargotec. In this folder you'll see our wide range of service exchange parts which represent excellent value for money for you to maximise the efficiency of your business.**

Genuine service exchange parts from Cargotec are fully guaranteed and provide you with the option of saving money by using a more cost effective reconditioned unit.

All products are re-manufactured to the highest standards. They are completely stripped down, re-manufactured and then fully tested, that's why we can guarantee them to be 100% interchangeable with the original factory fit units.

You can use this guide to identify the part or component you need, e.g. new component p/n 920871.0073 exchange p/n 920871.U073 or new p/n N5830190 exchange p/n N5830190A, then simply get in touch with us to place your order.

Genuine service exchange units from Kalmar. It's the fast and simple way to save money on major parts.





## Rules of acceptance for returned parts

The following applies to all exchange parts.

Cores that are returned dismantled or damaged will be invoiced.

Cores that are returned with missing components will have the actual missing parts list price invoiced.

Open connections should be plugged to avoid the possibility of contamination.

The customer will cover the cost of disposal and clean up of Engines, Transmissions, Differentials, Lifting Cylinders, Radiators, Angel gears and all brake parts.

If the part requires flushing clean, a fee will be invoiced.

If the part has not been completely drained of oil, a fee will be invoiced.



## Rules and procedures

The Parts Exchange item price is based on the customer paying for the return of the used component.

Failure to return the defective component within 60 days will incur the cost of the replacement part and an administration fee.

The warranty remains valid for a period of six months or 1000 cumulative hours, whichever comes first.

The part label (red) has to be correctly filled in and attached to the part. It must include the following information:

Kalmar order number  
Serial number  
Operating hours  
Kalmar part number



KALMAR	
SERVICE EXCHANGE CORE UNIT RETURN	
Order No.	
Serial No.	
Operating Hours	
Part No.	
Return Address: Corporate Federal City, Långgatan 24 SE-24181 Ljungby, Sweden Tel: +46 372 26010	



# Contents

Alternators

Brakes

Compressors

Differentials

El-system

Engines

Fuel Injection

Radiators

Starters

Steering

Transmission

Turbos

SC Unique





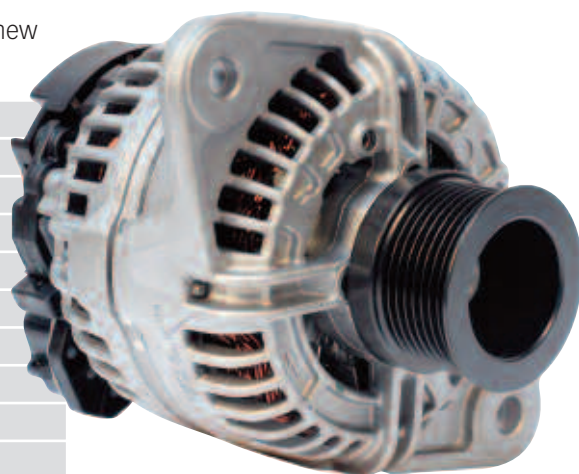


# Alternators

Alternators	
Part Number	Description
920810.U002	ALTERNATOR
923107.U537	ALTERNATOR
924287.U011	ALTERNATOR

The below range is not exchange but our parallel range to our new part numbers

Part Number	Description
800042169N	ALTERNATOR
800042951N	ALTERNATOR
835339422N	ALTERNATOR
835339751N	ALTERNATOR
836659786N	ALTERNATOR
920810.E001	ALTERNATOR
921066.E006	ALTERNATOR
921066.N005	ALTERNATOR
923109.N539	ALTERNATOR
923110.E472	ALTERNATOR
923110.N523	ALTERNATOR
923120.N377	ALTERNATOR
923726.E172	ALTERNATOR
923726.E561	ALTERNATOR
923829.N663	ALTERNATOR
923976.N231	ALTERNATOR
923976.N995	ALTERNATOR





# Brakes

Brakes	
Part Number	Description
923110.U927	BRAKE SHOE AND LINING
4401.U	BRAKE SHOE AND LINING
921274.U004	BRAKE SHOE AND LINING
921274.U006	BRAKE SHOE AND LINING
923120.U279	BRAKE SHOE AND LINING
923120.U280	BRAKE SHOE AND LINING
923120.U281	BRAKE SHOE AND LINING
923120.U322	BRAKE SHOE AND LINING







# Compressors

Compressors	
Part Number	Description
800039501A	COMPRESSOR
920187.U02	COMPRESSOR
923107.U651	COMPRESSOR
923110.U077	COMPRESSOR
923692.U008	COMPRESSOR 24V
924287.U015	COMPRESSOR









# Differentials

DIFFERENTIALS	
Part Number	Description
802310995A	DIFFERENTIAL
9033.U31	DIFFERENTIAL
922398.U002	DIFFERENTIAL
922398.U005	DIFFERENTIAL
922983.U004	DIFFERENTIAL
923109.U461	DIFFERENTIAL
923109.U745	DIFFERENTIAL
923436.U107	DIFFERENTIAL
923436.U313	DIFFERENTIAL
923436.U314	DIFFERENTIAL
923468.U513	DIFFERENTIAL
923636.U492	DIFFERENTIAL
923726.U182	DIFFERENTIAL
923726.U183	DIFFERENTIAL
923726.U443	DIFFERENTIAL
923736.U684	DIFFERENTIAL
923828.U608	DIFFERENTIAL
923978.U532	DIFFERENTIAL
923436.U893	DIFFERENTIAL
923436.U894	DIFFERENTIAL
923436.U897	DIFFERENTIAL
923436.U898	DIFFERENTIAL







# El-system

## Electrical Motors

Part Number	Description
922480.U008	ELECTRICAL MOTOR
922481.U002	ELECTRICAL MOTOR

## Control Units

Part Number	Description
65237259A	CPU UNIT
922825.U001	CONTROL UNIT 600
922825.U002	CONTROL UNIT 400
922825.U003	CONTROL UNIT 600
923732.U001	ECU-BOX
923876.U010	CONTROL UNIT 1000A/80V
923876.U023	CONTROL UNIT 1000A/80V
923876.U024	CONTROL UNIT HD 1000A/80V



## Speed Controls

Part Number	Description
922190.U004	SPEED CONTROL
922190.U001	SPEED CONTROL
922190.U003	SPEED CONTROL

## Power Units

Part Number	Description
921796.U001	POWER UNIT
921796.U003	POWER UNIT

## Circuit Boards

Part Number	Description
922825.U040	CIRCUIT BOARD
922825.U087	CIRCUIT BOARD
DN5948480A	CIRCUIT BOARD

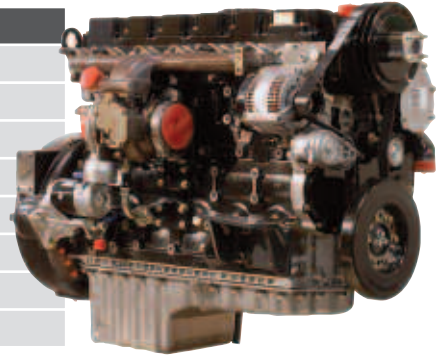




# Engines

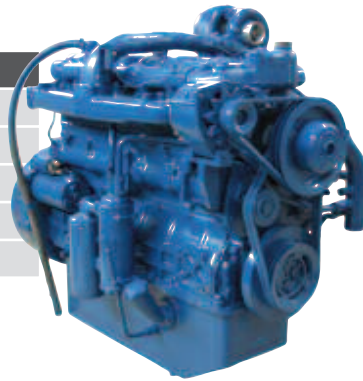
## Perkins

Part Number	Description
920117.U01	ENGINE
920117.U07	ENGINE
920117.U12	ENGINE
920117.U18	ENGINE
920117.U26	ENGINE
920117.U27	ENGINE
920117.U55	ENGINE



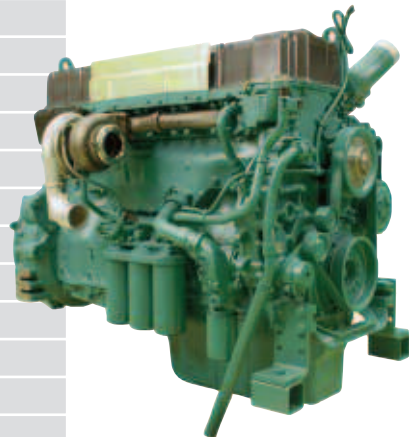
## Sisu

Part Number	Description
J024103A	ENGINE
N5794200A	ENGINE
N5853420A	ENGINE
N5927390A	ENGINE



## Volvo

Part Number	Description
920871.U014	ENGINE
920871.U018	ENGINE
920871.U021	ENGINE
920871.U036	ENGINE
920871.U046	ENGINE
920871.U050	ENGINE
920871.U052	ENGINE
920871.U058	ENGINE
920871.U062	ENGINE
920871.U073	ENGINE
924287.U007	ENGINE









# Fuel Injection

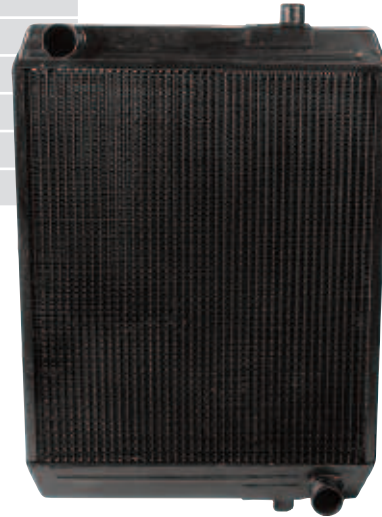
Fuel Injection	
Part Number	Description
920400.U01	INJECTION PUMP
921482.U004	INJECTION PUMP
923349.U542	INJECTION PUMP
923349.U700	INJECTION PUMP
923458.U166	INJECTION PUMP
923705.U326	INJECTION PUMP
923705.U900	INJECTION PUMP
923829.U868	FUEL PUMP, HIGH PRESSURE
923944.U952	INJECTION PUMP
924287.U017	FUEL PUMP, HIGH PRESSURE
923976.U558	INJECTOR
924287.U018	INJECTOR
924287.U021	INJECTOR
J018323A	INJECTOR





# Radiators

Radiators	
Part Number	Description
5507.U	RADIATOR
920205.U01	RADIATOR
922216.U005	RADIATOR
922216.U006	RADIATOR
922216.U010	RADIATOR





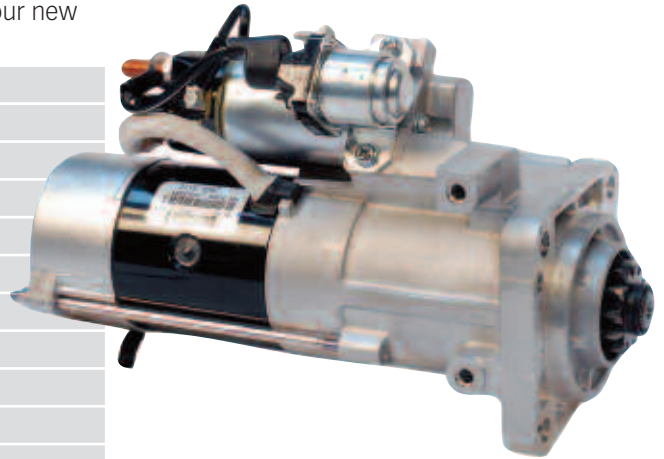


# Starters

Starters	
Part Number	Description
924287.U012	STARTER MOTOR
924287.U013	STARTER MOTOR

The below range is not exchange but our parallel range to our new part numbers

Part Number	Description
800037772N	STARTER MOTOR
800042176N	STARTER MOTOR
800044943N	STARTER MOTOR
836664354N	STARTER MOTOR
922318.N001	STARTER MOTOR
922318.N002	STARTER MOTOR
922318.N003	STARTER MOTOR
922318.N008	STARTER MOTOR
923109.N538	STARTER MOTOR
923736.N111	STARTER MOTOR
923829.N309	STARTER MOTOR
923936.N328	STARTER MOTOR
923978.N080	STARTER MOTOR









# Steering

Steering	
Part Number	Description
K0808002HA	STEERING ORBITROL
90038.U	STEERING ORBITROL
920207.U01	STEERING ORBITROL
920207.U11	STEERING ORBITROL

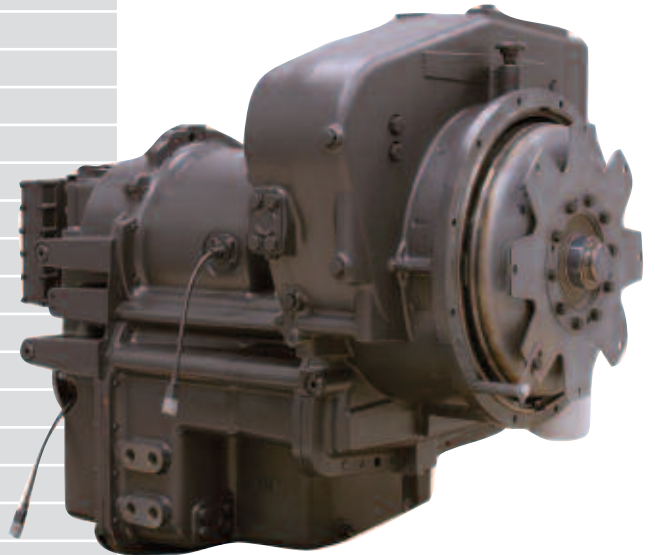




# Transmissions

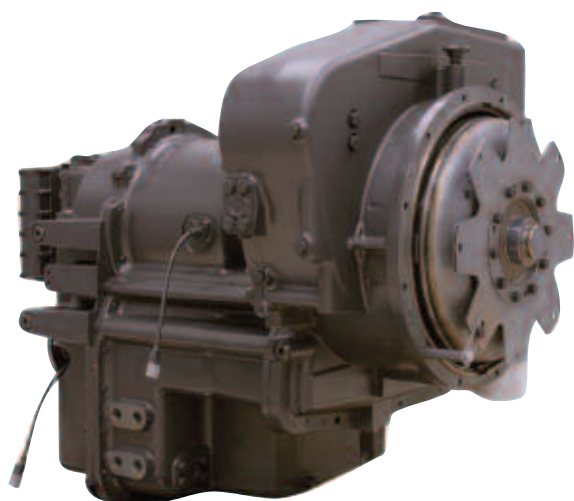
Allisons	
Part Number	Description
5062.U	GEAR BOX
5066.U	GEAR BOX
922528.U005	GEAR BOX
T0201018HA	GEAR BOX
5068.U	GEAR BOX

Clark / Dana Spicer	
Part Number	Description
921507.U002	GEAR BOX
921507.U007	GEAR BOX
922297.U048	GEAR BOX
922297.U060	GEAR BOX
922297.U047	GEAR BOX
922297.U051	GEAR BOX
921507.U008	GEAR BOX
922297.U101	GEAR BOX
922297.U100	GEAR BOX
922297.U107	GEAR BOX
922297.U108	GEAR BOX
922297.U137	GEAR BOX
922297.U004	GEAR BOX
T0201042HA	GEAR BOX
5395.U	GEAR BOX
920590.U001	GEAR BOX
N0201057HA	GEAR BOX
T0201056HA	GEAR BOX
T0201081HA	GEAR BOX
N0201069HA	GEAR BOX
N5682460 A	GEAR BOX
922297.U069	GEAR BOX
922297.U040	GEAR BOX
922297.U018	GEAR BOX
922297.U057	GEAR BOX
922297.U007	GEAR BOX
922297.U090	GEAR BOX
922297.U038	GEAR BOX
922297.U073	GEAR BOX





# Transmissions



## Clark / Dana Spicer

Part Number	Description
922297.U116	GEAR BOX
922297.U070	GEAR BOX
922297.U096	GEAR BOX
922297.U117	GEAR BOX
922297.U113	GEAR BOX
922297.U128	GEAR BOX
922297.U129	GEAR BOX
T0201047HA	GEAR BOX
K0201079HA	GEAR BOX
T0201063HA	GEAR BOX
K0201083HA	GEAR BOX
K0201082HA	GEAR BOX
922297.U094	GEAR BOX
922297.U074	GEAR BOX
922297.U087	GEAR BOX
922297.U091	GEAR BOX
922297.U138	GEAR BOX
922297.U106	GEAR BOX
922297.U134	GEAR BOX
921507.U003	GEAR BOX
922297.U149	GEAR BOX
922297.U139	GEAR BOX
R0201112HA	GEAR BOX
1350002711A	GEAR BOX
922297.U068	GEAR BOX
922297.U085	GEAR BOX
922297.U065	GEAR BOX
3350000041A	GEAR BOX
R0201099HA	GEAR BOX

## Durst / Borg Warner

Part Number	Description
920821.U001	GEAR BOX
920821.U042	GEAR BOX
920821.U153	GEAR BOX
920821.U211	GEAR BOX

# Transmissions

Voith	
Part Number	Description
9030.U912	GEAR BOX
922751.U074	GEAR BOX
922751.U075	GEAR BOX
922751.U076	GEAR BOX
923108.U408	CONTROL VALVE
923458.U556	CONTROL VALVE

ZF	
Part Number	Description
923892.U011	GEAR BOX
923892.U008	GEAR BOX
N0201072HA	GEAR BOX
N0201073HA	GEAR BOX
N5759030A	GEAR BOX
N5910910A	GEAR BOX
1330461111A	GEAR BOX
T0202002HA	GEAR BOX





# Turbos

Turbos	
Part Number	Description
921561.U005	TURBO CHARGER
921561.U006	TURBO CHARGER
923110.U064	TURBO CHARGER
923110.U065	TURBO CHARGER
923705.U539	TURBO CHARGER
923855.U065	TURBO CHARGER
924287.U009	TURBO CHARGER
924287.U010	TURBO CHARGER
924287.U019	TURBO CHARGER
924287.U020	TURBO CHARGER







# SC Unique

SC Unique	
Part Number	Description
N0401136HA	ANGLE GEAR
N0401137HA	ANGLE GEAR
N5830610A	REDUCTION GEAR
N5830190A	LIFT CYLINDER
N5914860A	LIFT CYLINDER
N5846050A	WET DISC BRAKE
JP102106A	BRAKE VALVE BLOCK
N0401141HA	WHEEL HUB DRIVE

